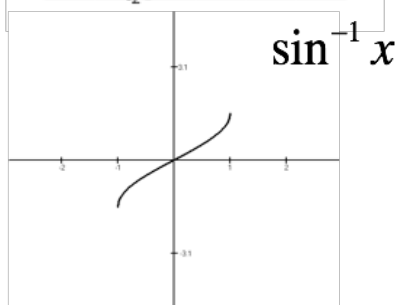
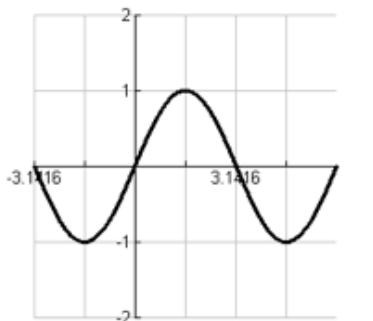
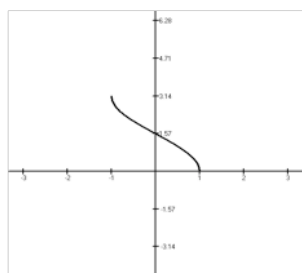


## Inverse Trig Functions

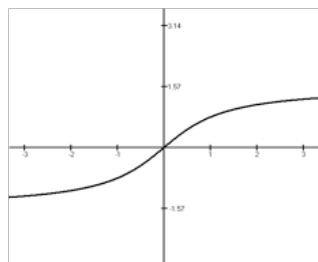
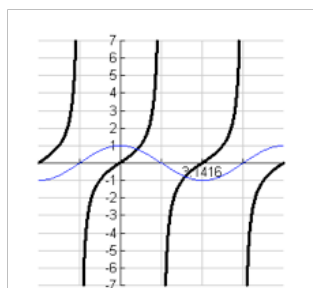


## Inverse Cosine

$$\cos^{-1} x$$



## Inverse Tangent



## Evaluating Inverse Functions

$$\sin^{-1}\left(\frac{1}{2}\right)$$

$$\sin^{-1}\left(\frac{\pi}{2}\right)$$

$$\cos^{-1}\left(-\frac{\sqrt{2}}{2}\right)$$

$$\tan^{-1}(\sqrt{3})$$

Use your calculator in radian mode to evaluate this inverse function

$$\sin^{-1}(-0.81)$$

Use your calculator in degree mode to evaluate this inverse function

$$\tan^{-1}(22.8)$$

## Composing Trigonometric Functions

$$\sin^{-1}\left(\sin\left(\frac{\pi}{9}\right)\right)$$

$$\cos\left(\sin^{-1}\left(\frac{1}{2}\right)\right)$$

$$\arctan(\cos(\pi))$$

$$\cos^{-1}\left(\cos\left(\frac{3\pi}{2}\right)\right)$$